

A decorative graphic consisting of a horizontal bar with a gradient from olive green on the left to white on the right. A thin gold circle is positioned behind the bar, partially overlapping it. A large black left square bracket is on the left side of the bar, and a large gold right square bracket is on the right side.

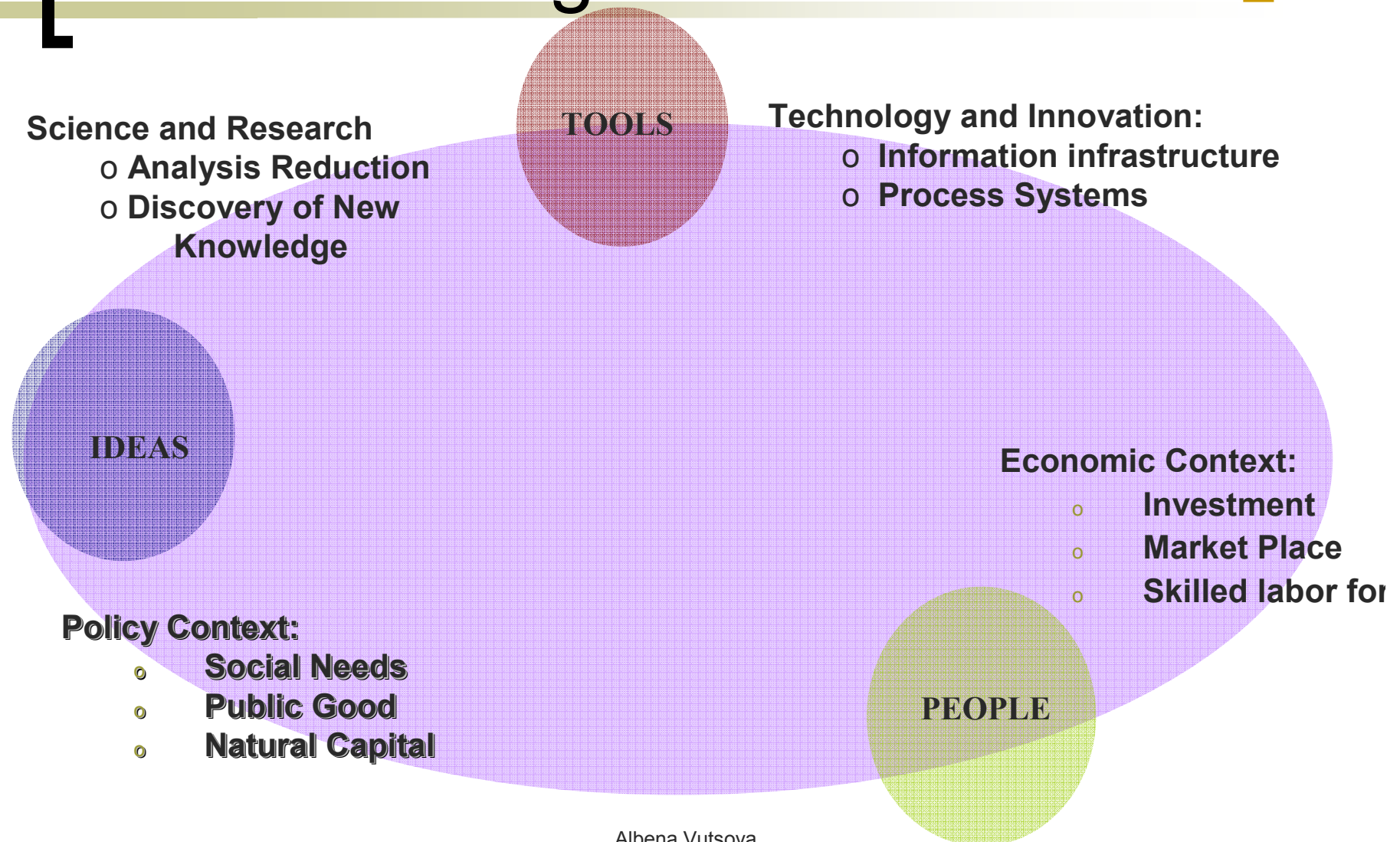
ERA – present and future

Albena Vutsova

[New Global Challenges]



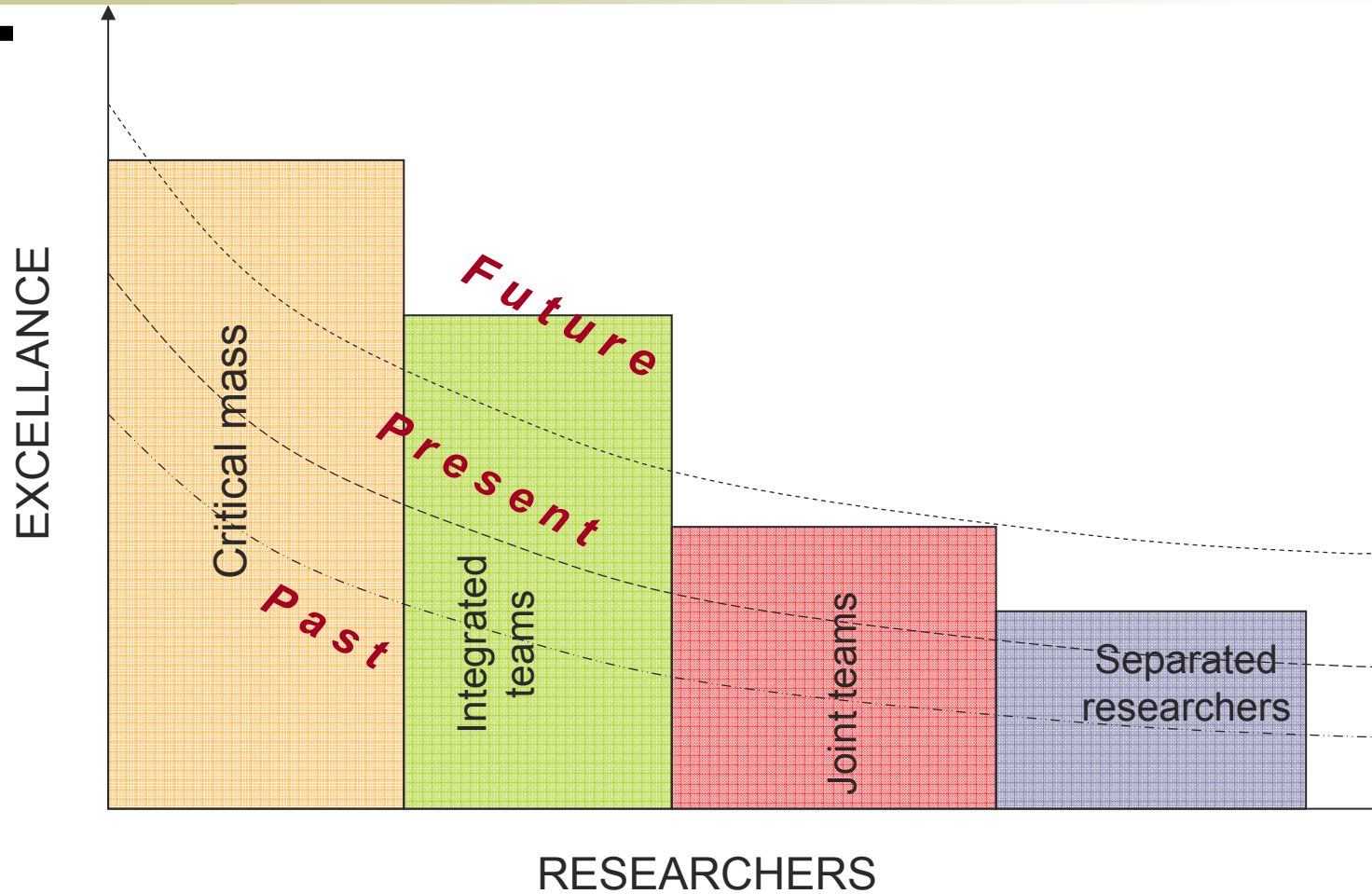
RT&I in the context of global changes



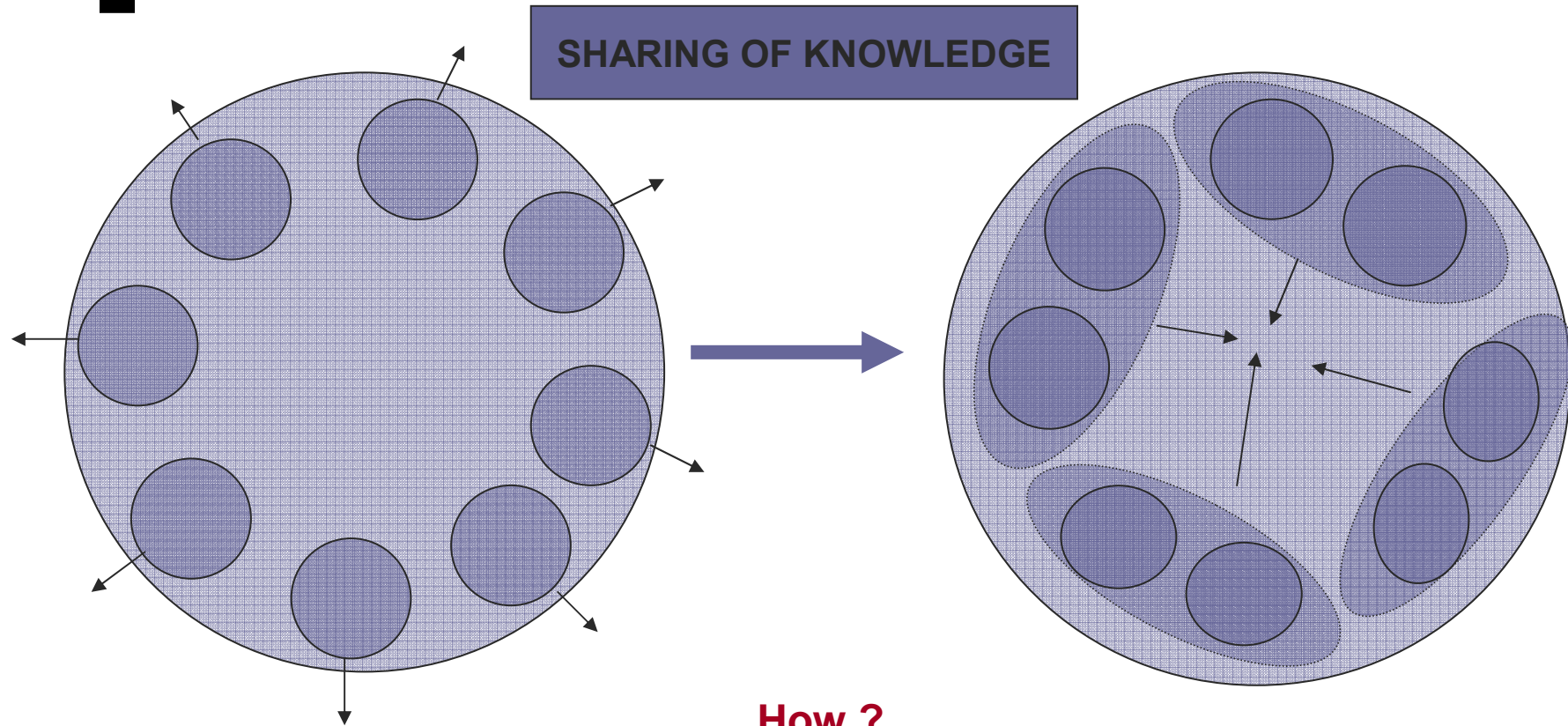
[What is ERA ?]

- Manner to address to global challenges
- New political frame for sustainable growth and qualitative life in Europe
- New approach to maximize the benefit of society and economy
- New tool for coherence of policies
- Path towards open innovation

Researchers and quality of research



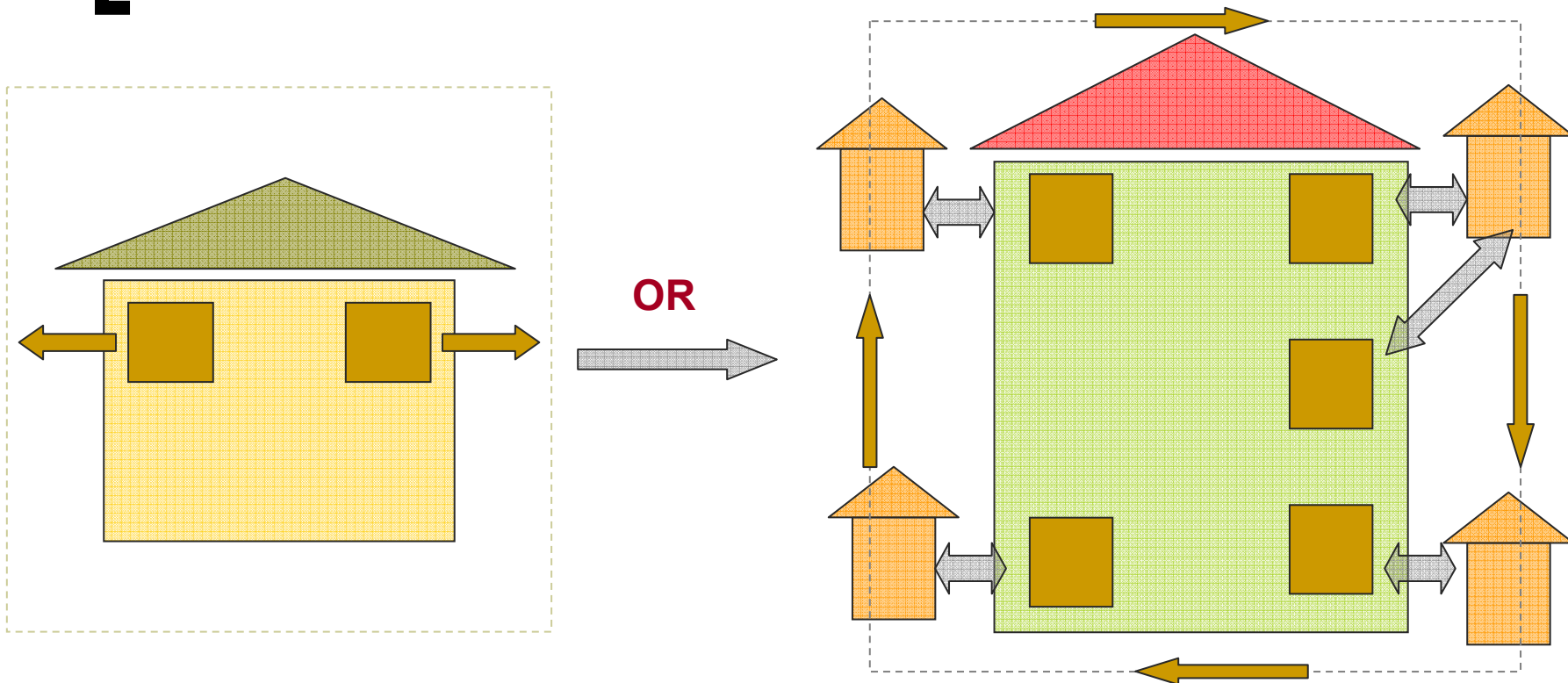
[Fragmentation]



Via consolidation of efforts, streamlining of resources and durable partnerships

Good practices: ETP, ERA- NET; ERA NET +; ART.169; EIT;JTI;

Human Resources – some ideas for better circulation



[...recommendable actions for the future...]

- More analyses and efficient feedback
- More adequate information and operative R&D data base
- More coherent and complementary actions
- Favorable milieu for research
- More sustainable results with higher added value

Results could change our future!